



TRADE MARKS IN AFRICA



ADAMS & ADAMS

Realise African Enterprise

ATTORNEYS

Patents | Trade Marks | Copyright | Designs | Commercial | Real Estate | Dispute Resolution

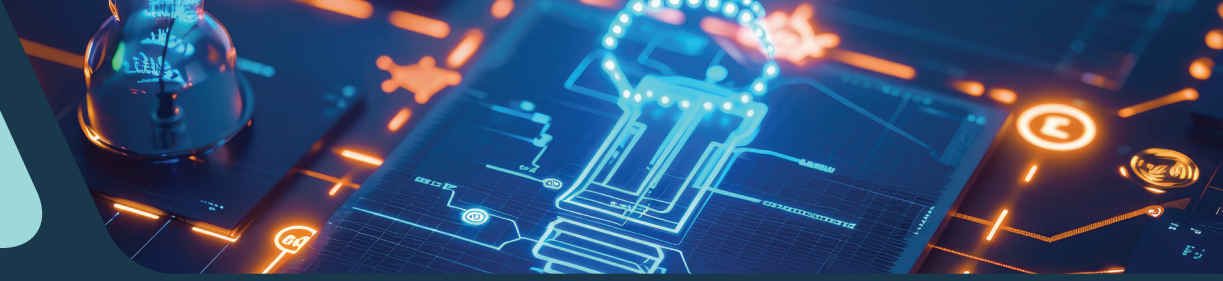
www.adams.africa



	PROTECTION OF WELL-KNOWN MARKS	MADRID REGISTRATIONS ENFORCEABLE	FIRST TO FILE JURISDICTION	OPPOSITION PROCEEDINGS POSSIBLE	NON-USE PERIOD FOR CANCELLATION	CUSTOMS RECORDALS POSSIBLE
ALGERIA	Yes	Yes	Yes	No	3 years	Yes
ANGOLA	Yes	No	Yes	Yes	2 years	No
BENIN	Yes (OAPI)	Yes (OAPI)	Yes	Yes	5 years	No
BOTSWANA	Yes	No	No	Yes	3 years	No
BURKINA FASO	Yes (OAPI)	Yes (OAPI)	Yes	Yes	5 years	No
BURUNDI	Yes	No	Yes	Yes	3 years	No
CAMEROON	Yes (OAPI)	Yes (OAPI)	Yes	Yes	5 years	No
CAPE VERDE	Yes	No	Yes	Yes	5 years	No
CENTRAL AFRICAN REPUBLIC	Yes (OAPI)	Yes (OAPI)	Yes	Yes	5 years	No
CHAD	Yes (OAPI)	Yes (OAPI)	Yes	Yes	5 years	No
COMOROS	Yes (OAPI)	Yes (OAPI)	Yes	Yes	5 years	Yes
CONGO, REPUBLIC OF	Yes (OAPI)	Yes (OAPI)	Yes	No	5 years	No
CONGO, DEMOCRATIC REPUBLIC OF	No	No	Yes	No	3 years	No
DJIBOUTI	Yes	No	Yes	No	5 years	No
EGYPT	Yes	Yes	Yes	Yes	5 years	Yes
EQUATORIAL GUINEA	Yes (OAPI)	Yes (OAPI)	Yes	Yes	5 years	No
ERITREA	N/A	N/A	N/A	N/A	N/A	No
ESWATINI (SWAZILAND)	Yes	No	No	Yes	3 years	No
ETHIOPIA	Yes	No	Yes	Yes	3 years	Yes
GABON	Yes (OAPI)	Yes (OAPI)	Yes	Yes	5 years	No
GAMBIA	Yes	No	No	Yes	5 years	No
GHANA	Yes	No	No	Yes	5 years	No
GUINEA	Yes (OAPI)	Yes (OAPI)	Yes	Yes	5 years	No
GUINEA-BISSAU	Yes (OAPI)	Yes (OAPI)	Yes	Yes	5 years	No
IVORY COAST	Yes (OAPI)	Yes (OAPI)	Yes	Yes	5 years	No
KENYA	Yes	Yes	No	Yes	5 years	Yes
LESOTHO	Yes	No	No	Yes	3 years	No
LIBERIA	Yes	No	Yes	Yes	5 years	No
LIBYA	Yes	No	Yes	Yes	5 years	No
MADAGASCAR	No	No	Yes	No	3 years	No

	PROTECTION OF WELL-KNOWN MARKS	MADRID REGISTRATIONS ENFORCEABLE	FIRST TO FILE JURISDICTION	OPPOSITION PROCEEDINGS POSSIBLE	NON-USE PERIOD FOR CANCELLATION	CUSTOMS RECORDALS POSSIBLE
MALAWI	Yes	No	No	Yes	5 years	No
MALI	Yes (OAPI)	Yes (OAPI)	Yes	Yes	5 years	No
MAURITANIA	Yes (OAPI)	Yes (OAPI)	Yes	Yes	5 years	No
MAURITIUS	Yes	Yes	No	Yes	3 years	Yes
MOROCCO	Yes	Yes	Yes	Yes	5 years	Yes
MOZAMBIQUE	Yes	Yes	Yes	Yes	5 years	No
NAMIBIA	Yes	No	No	Yes	3 years	No
NIGER	Yes (OAPI)	Yes (OAPI)	Yes	Yes	5 years	No
NIGERIA	No	No	No	Yes	5 years	No
OAPI	Yes	Yes	Yes	Yes	5 years	No
RWANDA	Yes	Yes	Yes	Yes	3 years	No
SÃO TOMÉ	Yes	No	Yes	Yes	5 years	No
SENEGAL	Yes (OAPI)	Yes (OAPI)	Yes	Yes	5 years	No
SEYCHELLES	Yes	No	No	Yes	3 years	No
SIERRA LEONE	No	No	No	Yes	5 years	No
SOMALIA	No	No	Yes	Yes	3 years	No
SOUTH AFRICA	Yes	No	No	Yes	5 years	Yes
SOUTH SUDAN*	No	No	Yes	No	N/A	No
SUDAN	Yes	No	Yes	Yes	5 years	Yes
TANZANIA	Yes	No	No	Yes	3 years	No
TOGO	Yes (OAPI)	Yes (OAPI)	Yes	Yes	5 years	No
TUNISIA	Yes	Yes	Yes	Yes	5 years	Yes
UGANDA	Yes	No	No	Yes	3 years	No
ZAMBIA	Yes	No	Yes	Yes	5 years	No
ZANZIBAR	Yes	No	No	Yes	3 years	No
ZIMBABWE	Yes	No	No	Yes	5 years	Yes

* Currently only reservation.



PRETORIA OFFICE

Lynnwood Bridge, 4 Daventry Street,
Lynnwood Manor, Pretoria, South Africa

PO BOX 1014, Pretoria 0001, South Africa

PHONE +27 12 432 6000

FAX +27 12 432 6599

EMAIL mail@adams.africa

CAPE TOWN OFFICE

22nd Floor, 2 Long Street, Cnr. Long Street and
Hans Strijdom Avenue, Cape Town, South Africa

PO BOX 1513, Cape Town 8000, South Africa

PHONE +27 21 402 5000

FAX +27 21 418 9216 (Patents)

+27 21 419 5729 (Trade Marks)

EMAIL cpt@adams.africa

JOHANNESBURG OFFICE

2nd Floor, 34 Fredman Drive
(Cnr. 5th Street), Sandton, South Africa

PO BOX 10155, Johannesburg 2000, South Africa

PHONE +27 11 895 1000

FAX +27 11 784 2888 (CPL)

+27 11 784 2872 (Patents)

+27 11 784 2889 (Trade Marks)

EMAIL jhb@adams.africa

DURBAN OFFICE

Suite 2, Level 3, Ridgeside Office Park,
21 Richefond Circle, Umhlanga Ridge,
Durban, South Africa

PO BOX 237, Umhlanga Rocks 4320, South Africa

PHONE +27 31 536 3740

FAX +27 31 536 8254

EMAIL dbn@adams.africa

Adams & Adams is uniquely placed to help fulfil the continent's potential

ADAMS & ADAMS

Realise African Enterprise

ASSOCIATE OFFICES

ANGOLA

angola@adams.africa

BOTSWANA

botswana@adams.africa

BURUNDI

burundi@adams.africa

CAMEROON (OAPI)

cameroon@adams.africa

oapi@adams.africa

CAPE VERDE

capeverde@adams.africa

EGYPT

egypt@adams.africa

ESWATINI (SWAZILAND)

eswatini@adams.africa

ETHIOPIA

ethiopia@adams.africa

GHANA

ghana@adams.africa

KENYA

kenya@adams.africa

LESOTHO

lesotho@adams.africa

LIBERIA

liberia@adams.africa

LIBYA

libya@adams.africa

MAURITIUS

mauritus@adams.africa

MOZAMBIQUE (ARIPO)

aripo@adams.africa

maputo@adams.africa

NAMIBIA

namibia@adams.africa

NIGERIA

nigeria@adams.africa

SIERRA LEONE

sierraleone@adams.africa

SÃO TOMÉ AND PRÍNCIPE

saotomeprincipe@adams.africa

TANZANIA

(including Zanzibar)

tanzania@adams.africa

THE GAMBIA

thegambia@adams.africa

ZIMBABWE

zimbabwe@adams.africa

ATTORNEYS

Patents | Trade Marks | Copyright | Designs | Commercial | Real Estate | Dispute Resolution

www.adams.africa

